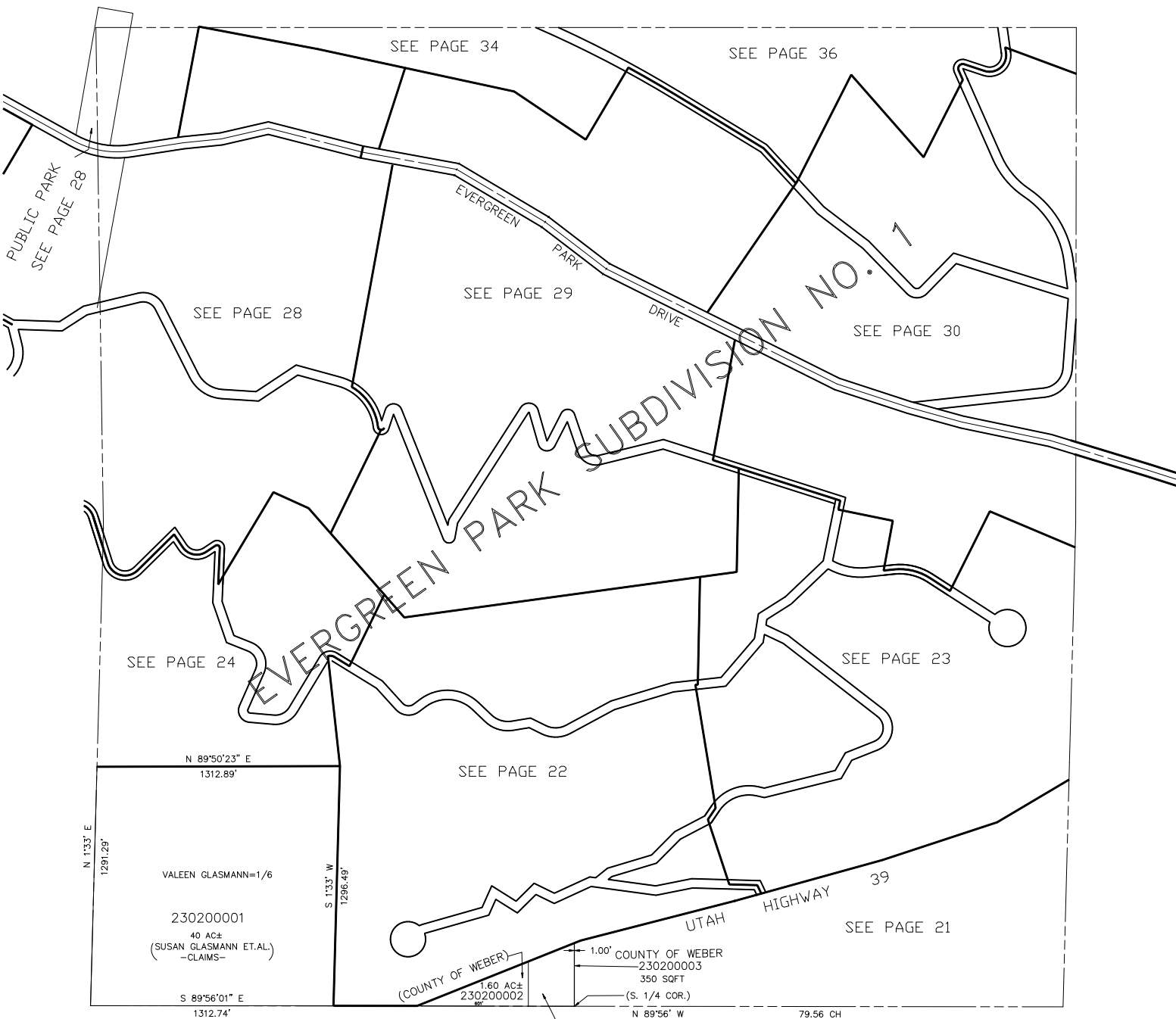


SECTION 32, T.7N., R.3E., S.L.B. & M.

IN WEBER COUNTY

SCALE 1" = 400'

TAXING UNIT: 520



NOTE: SEE GOV. LAND OFFICE
 DEPENDENT RESURVEY. NOT OFFICIALLY
 RECORDED IN THIS OFFICE, BUT FILED
 IN PLAT BOOK 12, PAGE 18 (ORIGINALS)
 FOR REFERENCE PURPOSES.